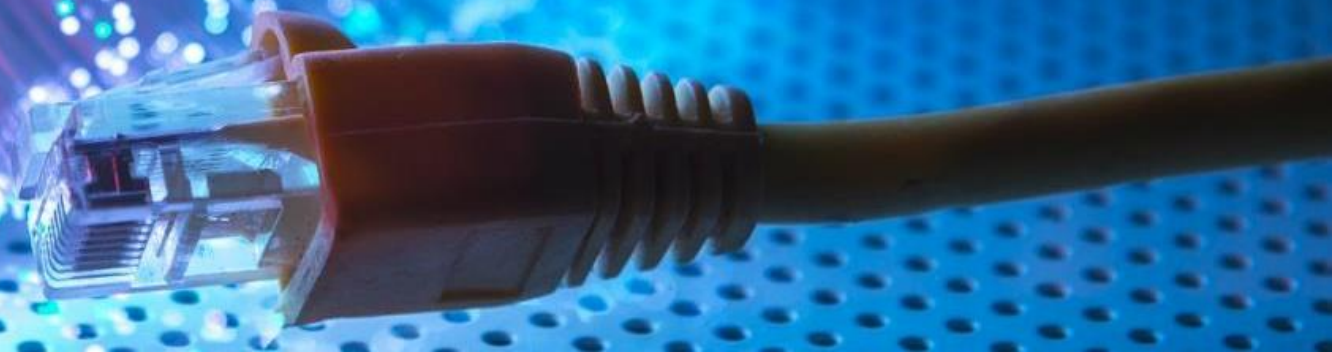


# DOVRE TOWNSHIP BROADBAND

Lighting  
up the  
Future







# 4 TOWNSHIPS 1 GOAL



ARCTANDER

MAMRE

DOVRE

ST. JOHNS



BORDER TO BORDER BROADBAND





**WHAT IS A SUBORDINATE SERVICE DISTRICT?**

## **SUBORDINATE SERVICE DISTRICT (SSD)**

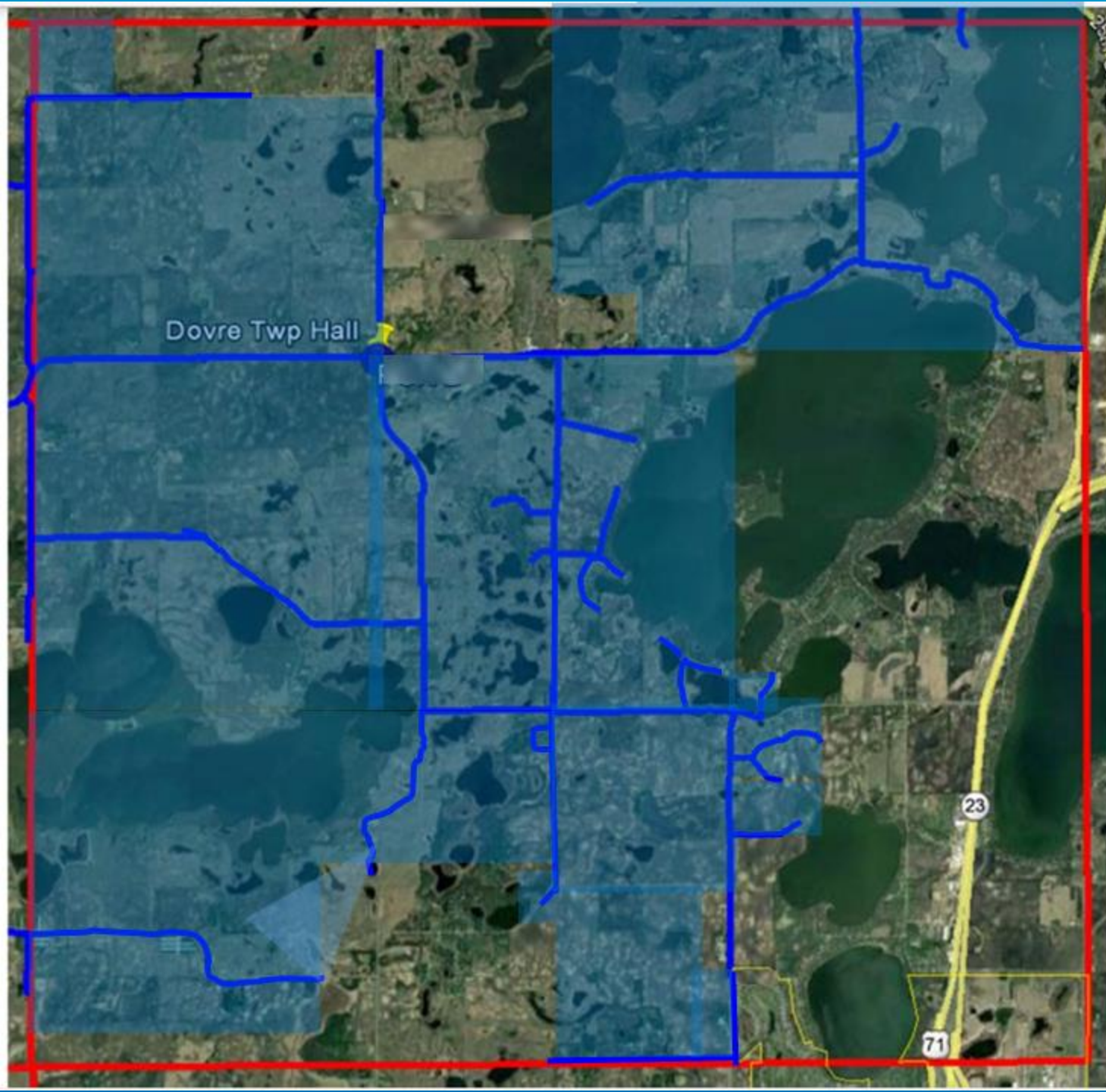
**SSDs are a financing tool that Townships can use to provide a service to property owners that request a service not provided to the entire Township.**

### **HOW WAS THE PROJECT AREA FOR THE SSD DETERMINED**

**Locations in Dovre Township that were not served by a provider that maintained an average download speed of 25Mg/sec and an upload speed of 3 Mg/sec were determined by the state to be underserved or unserved.**

**Parcels that had 911 addresses and had a building that could be lived in or contained a business were included in the service area.**





## DOVRE

**261 SERVICE LOCATIONS**

**APPROXIMATELY 1/3 OF THE  
TOTAL LOCATIONS IN DOVRE  
TOWNSHIP.**

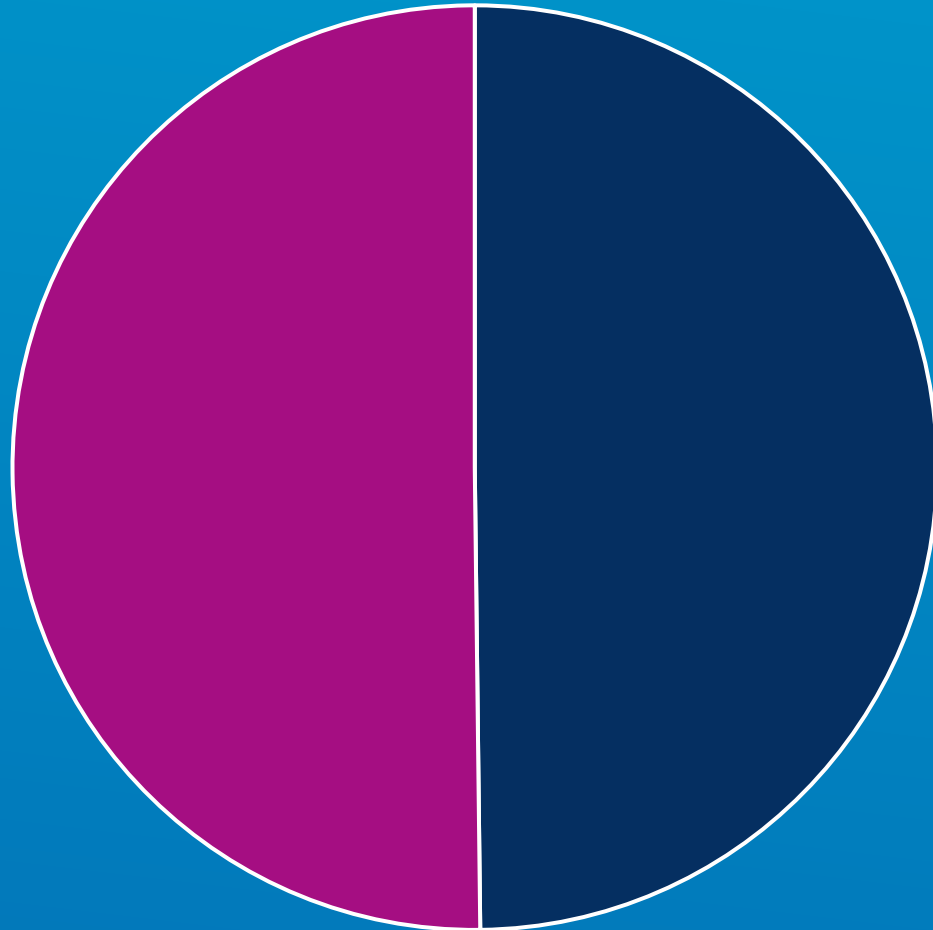
A bundle of fiber optic cables is shown against a dark background. The cables are illuminated from the right, creating a bright green and blue glow. The light trails from the cables are visible, and the overall scene has a futuristic, high-tech feel. In the bottom right corner, there are several thin, white, parallel lines that appear to be part of a graphic design element.

**HOW IS AN SSD FORMED?**

- A subordinate service district may be established by petition. The petition must be signed by at least 50% of the property owners in the area to be served.
- Within 30 days of receiving a valid petition, the Town Board must hold a public hearing and then approve, approve with modifications, or disapprove the request.
- The creation of a subordinate service district is subject to reverse referendum. If 25 percent of property owners in the district petition for a referendum, a special election must be held. When this occurs, the district is not established unless approved by a majority of those voting on the question.



Number of Signatures Possible = 530



□ OPPOSE 264   □ SUPPORT 265   □   □

**261 SERVICE LOCATIONS**

**APPROXIMATELY 530 SIGNATURES**

**EACH UNIQUE OWNER WITHIN THE SERVICE DISTRICT IS COUNTED IN THE TOTAL # OF SIGNATURES NECESSARY TO MOVE FORWARD.**

**APPROXIMATELY 266 SUPPORTIVE SIGNATURES TO PROCEED.**

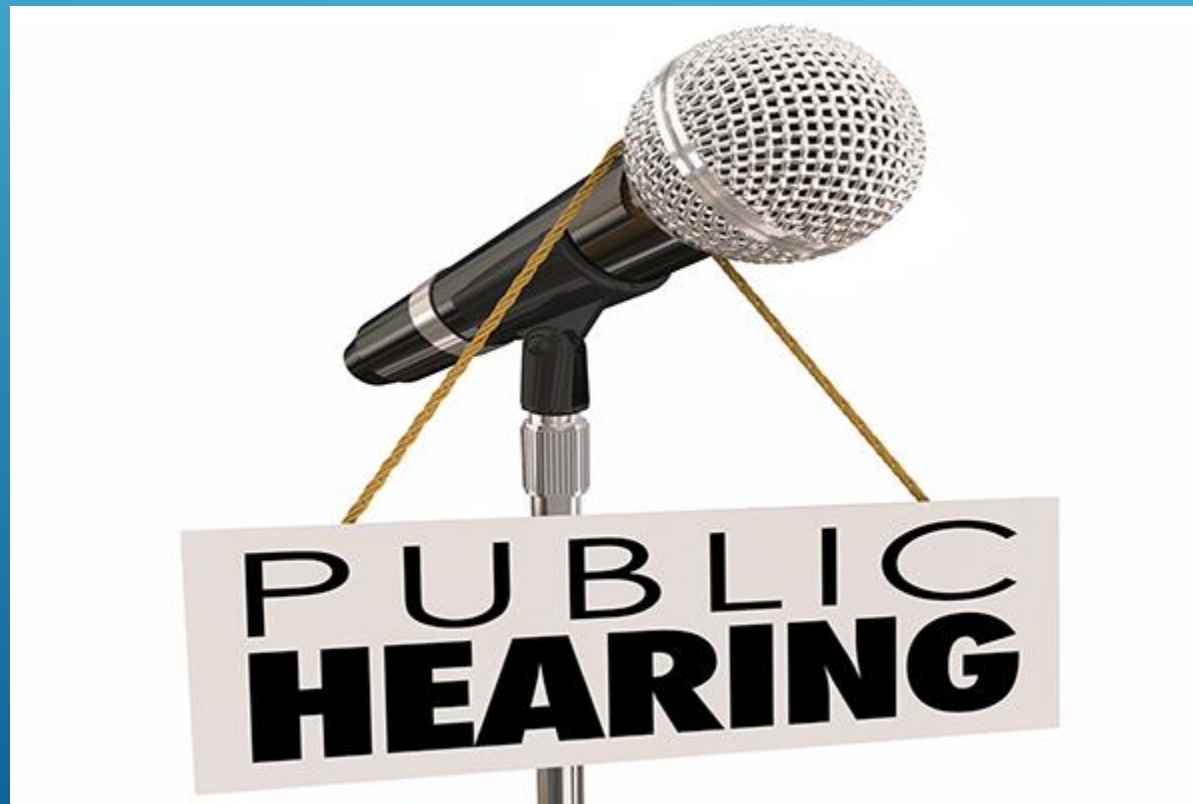
**IF A HUSBAND AND WIFE OWN A PROPERTY AND SUPPORT THE PROJECT, EACH INDIVIDUAL SHOULD SIGN THE PETITION.**






**HOW WILL WE BE INFORMED THAT WE  
HAVE REACHED THE # REQUIRED TO  
PROCEED?**

Once the Township has received 51% of the property owner signatures, everyone will be notified of a public hearing. Notifications will be mailed out to everyone within the service area 10 days prior to the hearing.







**If I don't sign the petition and there are more than 50% of property owners in favor, will I still be assessed? YES**

A bundle of fiber optic cables is shown, with the ends glowing in vibrant blue and green colors. The cables are set against a dark background that features a faint, light-colored silhouette of a world map. The overall aesthetic is futuristic and technological.

**NEXT STEPS**



**Each location in the service district will be sent a mailing with the letter, petition and a return envelope.**

**If you sign tonight you can turn in your petition when you leave.**

**If you need an additional petition for individuals at your location, who could not attend this evening, you can pick up a petition for them to sign when you turn yours in.**

**Please sign the petition and encourage your neighbors to sign and return within 10 days.**